



AO TE PŌ AUCTION

TIKA PONO TOI GALLERY & STUDIO

CATALOGUE



THE
GENERATOR



TIKA PONO TOI EXHIBITION AND AUCTION

AO TE PŌ – LIGHTEN THE DARKNESS

THE TIKA PONO TOI RESIN FLOOR ART INSTALLATION
(Designed by Adams Family Productions, installed by Mark Lang)

BLACK & GOLD TIKA PONO TOI CAKE AND CUPCAKES (made by Teniqua Jones)

Charity Auction	Page 5
Ane Pomale	Page 11
Papamama Pokino	Page 17
Temaleti Vatangina	Page 19
Mataria Gail Pekepo	Page 23
Mele Lolohea	Page 27
TK Taito	Page 32
Pofaiva Talakai	Page 35
Moshen Sakhravi	Page 37
Lloyd Matiu-Whiri	Page 40
Ashlee Bayne	Page 42
Janine Ngarimu-Whyte	Page 44
Troy Jackson	Page 47
Danielle Adams	Page 51
Mark Lang	Page 61



The Tika Pono Toi resin floor art installation has been designed by Danielle Adams and Jesse White ([Adams Family Productions](#)), with design and print services from Sam Prince ([Stickers 'n' Stuff](#)) and installed by Mark Lang.

The resin floor art design depicts our life-long journey of learning in the spiritual and physical world.

The Poutama (stairway to heaven) stepped pattern symbolises levels of attainment and advancement and our growth, striving ever forwards towards betterment.

The twelve waves represents nga rangi tuhaha, the twelve realms of heaven that stand above us.

Tāne, reached the summit of all the heavens where he was welcomed by Io and received the three baskets of knowledge and the two sacred stones.

The whai (stingray) signify abundance. Taking the right path, with the right people and moving forward in the right direction, increases our prosperity and oranga (wellbeing) in a never-ending journey.



Black and Gold Tika Pono Toi cake and 100 plus cupcakes made by Teniqua Jones.

As an accomplished baker, Teniqua took the next step with The Generator and now runs a highly successful cake business, [Teniqua Kekery](#), adding income to her household.

She was a contestant in The Kiwi Bake Off and was selected as the test baker for Whitakers Chocolate. Her story also featured in the latest Woman's Day magazine. Teniqua is a treasured Tuakana helping others through The Generator process too.

Click [here](#) for Teniqua's story



Scan the code with your smartphone camera to get in touch with Sam



Scan the code with your smartphone camera to get in touch with Teniqua



CHARITY AUCTION

ARTISTS/CRAFTERS

JOHNNY ANGEL
MARK LANG
ANE POMAIE
PAPAMAMA POKINO



THE
GENERATOR



Johnny Angel. Pacific Elvis

Johnny Eneliko Laulu, better known as Johnny Angel, is the one and only Pacific (Samoan) Elvis. The Generator opportunity came at a time when Johnny was managing a number of challenges in his life, including depression. Music and art have always been Johnny's saviour, as he has a Bachelor in Art Design. He is donating these paintings for The Charity Auction.

<https://www.facebook.com/johnnyangel1972>

<https://thegenerator.org.nz/inspiration/projects/johnnyenelikolaulujl>



Scan the code with your smartphone camera to get in touch with the artist

JA01 - CHARITY

JOHNNY ANGEL



“ALOFA IA TE OE”
I LOVE YOU

This large painting depicts a man thinking he has found his forever life partner.

JA02 - CHARITY

JOHNNY ANGEL



GUARD YOUR HEART

This large painting warns a young man to protect himself and have clear boundaries, so others do not take advantage of him.

JA03 - CHARITY

JOHNNY ANGEL



THE MAN IN THE MIRROR

This large painting shows that on the outside a man can look like he has everything going for him, but on the inside, he is struggling. When he looks at himself in the mirror all he sees are the shortfalls and struggles.

TIKA PONO TOI

The art of carving was Mark's pathway back to wellbeing and mana. He learnt his craft while in Hawkes Bay prison under the [Hokai Rangī](#) programme. While in prison he carved several significant taonga including a carving now located in Corrections Head Office in Wellington, Tipuna Pou for Ngati Pahauwera, and taonga for 2021-2022 Te Putanga Toi Arts Access Awards. This exhibition displays some of his commissioned pieces and some items for auction.

<https://www.facebook.com/tika.pono.toi>

<https://thegenerator.org.nz/inspiration/projects/marklangml>

ML01 - CHARITY

MARK LANG

PATU

The Patu is a traditional Māori weapon used as a thrusting weapon to strike the opponent below the ribs, on the temple, or across the jaw. Traditionally the patu was made from wood, whalebone, or stone. If made from greenstone (pounamu) the patu was usually called a mere.



Ane Pomale is from (Vava'u and Hapai) in Tonga. Since she was a young child Ane has been interested in designing and making her own clothes and handicrafts. She is now well known for her unique Pasifika designs and use of natural materials.

Ane Pomale Art & Crafts:

<https://www.facebook.com/profile.php?id=100093827234369>

APO1-CHARITY



ANE POMALE

LARGE TAPA FAN

Large Tapa Fan.

APO2-CHARITY



ANE POMALE

FLOWER ARRANGEMENT

Woven Pandan leaves flower arrangement.



Papamama Pokino was born in Rarotonga but raised in Fiji. Facing challenging circumstances that put his studies on hold and with their first child on the way, Papamama tried carving pareu boards as a way of supplementing his family's income. Since then, he has not looked back. Each board is a unique Pasifika design, with the double-sided boards being his most popular.

<https://www.facebook.com/pareu.boards.7>

<https://thegenerator.org.nz/inspiration/projects/papamamapokinopp>

PP01 - CHARITY



PAPAMAMA POKINO

PAREU BOARD

1 single sided pareu board.

ARTIST/CRAFTER

ANE POMAIE



THE
GENERATOR



Ane Pomale is from (Vava'u and Hapai) in Tonga. Since she was a young child Ane has been interested in designing and making her own clothes and handicrafts. She is now well known for her unique Pasifika designs and use of natural materials.

Ane Pomale Art & Crafts:

<https://www.facebook.com/profile.php?id=100093827234369>



Scan the code with your smartphone camera to get in touch with the artist



AP01

ANE POMALE

COCONUT HUSK NECKLACE WITH PAUA KAFA

Coconut husk necklace with paua kafa



AP02

ANE POMALE

NECKLACE SHELL & KIEKIE

Necklace shell & kiekie.



AP03

ANE POMALE

KIEKIE FAU

Kiekie fau, coconut shell & mulberry tree twine belt.



AP04

ANE POMALE

SMALL BOUQUET

Small bouquet tapa, shells, pandan.



AP05

ANE POMALE

TAPA BOUQUET

Tapa bouquet in tapa vase with shells.





AP06-1/-2/-3

ANE POMALE

LARGE FANS

Large Fans.

3x fans



AP07

ANE POMALE

SMALL TAPA FAN

Small tapa fan.



AP08

ANE POMALE

MEDIUM TAPA FAN

Medium tapa fan.



AP09

ANE POMALE

BLACK TAPA FAN

Black tapa fan.



AP10

ANE POMALE

LARGE HEART BOUQUET IN VASE

Large heart bouquet in vase.



AP11

ANE POMALE

BOUQUET IN VASE PANDAN LEAVES & SHELLS

Bouquet in vase pandan leaves & shells.



API2

ANE POMALE

WALL HANGING HEART

Wall hanging heart pandan leaves and shells.



API3

ANE POMALE

WALL HANGING CIRCLE

Wall hanging circle pandan leaves and shells.



API4

ANE POMALE

HEART-SHAPED FLORAL ARRANGEMENT

Heart-shaped floral arrangement.



ARTIST/CRAFTER

PAPAMAMA POKIÑO



THE
GENERATOR



Papamama Pokino was born in Rarotonga but raised in Fiji. Facing challenging circumstances that put his studies on hold and with their first child on the way, Papamama tried carving pareu boards as a way of supplementing his family's income. Since then, he has not looked back. Each board is a unique Pasifika design, with the double-sided boards being his most popular.

<https://www.facebook.com/pareu.boards.7>

<https://thegenerator.org.nz/inspiration/projects/papamamapokinopp>



Scan the code with your smartphone camera to get in touch with the artist



PP01-1/-2/-3

PAPAMAMA POKINO

PAREU BOARDS

Pareu Boards 1, 2, 3, 4 (small). All single-sided.



ARTIST/CRAFTER

TEMAIETI VAANGINA



THE
GENERATOR



Temaleiti is from (Tongatapu) in Tonga. She is a self-taught crafter of Tongan dance costumes and is well known for the quality of her work.

Kiloma Handicrafts

<https://thegenerator.org.nz/inspiration/projects/temaletivaianginatv>



Scan the code with your smartphone camera to get in touch with the artist



TV01

TEMALETI VAIANGINA

TEUNGA TEUOLUNGA

White Tongan dance costume with wrist and ankle bands, necklace dress and head piece.



TV02-1/-2/-3

TEMALETI VAIANGINA

KAHOA (NECKLACES)

1 Red & black kahoa. 1 Red kahoa.



TV03

TEMALETI VAIANGINA



CHILD'S DANCE COSTUME
(TEUNGA TEUOLUNGA)

Child's Tongan dance costume. Kahoa(necklace) and Kafa (belt).

TV04

TEMALETI VAIANGINA



KAFA (TROPICAL PLANTS)

Kafa (tropical plants).

TV05

TEMALETI VAIANGINA

WHITE SATIN GIFT BASKET

White satin gift basket.



TV06

TEMALETI VAIANGINA

WOVEN GIFT BASKET WITH PEACOCO FEATHER AND SHELLS

Woven gift basket with Peacoco feather and shells.



ARTIST/CRAFTER

MATARIA GAIL PEKEPO



THE
GENERATOR



Tepura Creations

Ma'taria Gail Pekepo is a young Cook Islander living in Dunedin. She has a passion for creating arts and crafts inspired by her Cook Island culture. For the past three years she has been handmaking and selling products from her home. Ma'taria is also The Generator Tukana for Dunedin-Oamaru.

<https://www.facebook.com/profile.php?id=100093117702548>

<https://thegenerator.org.nz/inspiration/projects/matariapekepomp>

Scan the code with your smartphone camera to get in touch with the artist



MGPO1-1/-2/-3

MA'TARIA GAIL PEKEPO

EI KATU X3

Pink, yellow and blue





MGPO2-1/-2

MA'TARIA GAIL PEKEPO

2 HAND WOVEN FANS

Hand woven fans fine weave.



MGPO3

MA'TARIA GAIL PEKEPO

HAND WOVEN HAT

Hand woven hat fine weave with mother of pearl crown.



MGPO4-1/-2

MA'TARIA GAIL PEKEPO

HAND STENCILLED AND PAINTED QUEEN SHEETS AND PILLOWCASES X2

2 Pareu, hand stencilled, orange and purple/green



MGP05-1/-2

MA'TARIA GAIL PEKEPO



PAREU

2X Pareu hand stencilled, unique design pink and yellow lavender.

Please note pink item is a second as slight miscolour in one corner.

MGP06

MA'TARIA GAIL PEKEPO



HAND STENCILLED KING SHEETS & PILLOWCASES

Hand stencilled and painted King sheets and pillowcases.

ARTIST/CRAFTER

MELE IOLOHEA



THE
GENERATOR

Graciela Arts and Crafts Leka

Mele Lolohea (Tongan) owns an arts and crafts business. This enables her to put her talents, mana and skills into practice and provides a source of income for their family. Mele is a skilled weaver making quality products as she has an eye for detail and finish. Mele believes her traditional arts and crafts tell the story of their journey from the Pacific Islands to Aotearoa, in search of a better future for their children.

<https://www.facebook.com/frix1976>

<https://thegenerator.org.nz/inspiration/projects/meleloloheam1>



Scan the code with your smartphone camera to get in touch with the artist



MELO1



MELE LOLOHEA

TAPA PAINTING (WHALE)

Tapa painting (Whale).

MELO2



MELE LOLOHEA

TAPA PAINTING (VILLAGERS FISHING)

Tapa painting (Villagers fishing).

MELO3

MELE LOLOHEA

LARGE WOVEN BASKET WITH TOWER

Large woven basket with tower.



MELO4

MELE LOLOHEA

SINGLE WOVEN BASKET WITH TOWER

Single woven basket with tower.



MELO5

MELE LOLOHEA

2x NECKLACES

2 Necklaces Heilala Fakava'e Pipi Tongi.

1 bright red and 1 red.



MELO6

MELE LOLOHEA

NECKLACE NUSHI XI

1 red.



MELO7

MELE LOLOHEA

HEILALA GARLAND

Heilala garland, pink & red.



MELO8

MELE LOLOHEA

HEILALA TONGI

Heilala Tongi (red and black)





MELO9

MELE LOLOHEA

COCONUT HUSK TA'OVALA PULU

Coconut husk Ta'ovala Pulu.



ARTIST/CRAFTER

TK TAITO



**THE
GENERATOR**

TKT Bridal and Couture. TK Taito aims to create and make fashion at its best from puletasi designs to diversity designs, ball gowns and wedding gowns.

TKs mother was a seamstress, and he picked up her skill and passion for fashion design and sewing by osmosis. A recent health scare, forced TK to review his priorities and refocus, so he picked up studies at the school of fashion. TK has relished this opportunity to not only outfit The Generator National Team for the event but also design an artistic garment that takes inspiration from the Tika Pono Toi logo.

<https://www.facebook.com/profile.php?id=100085299139439>

<https://thegenerator.org.nz/inspiration/projects/tktaitotk>

Scan the code with your
smartphone camera to get
in touch with the artist



TT01

TK TAITO

LADY DEZ

Black 2 piece set, chiffon wrap skirt and inner dress with flamboyant sleeve on one side. A corporate look for the office or to just look fabulous.



TT02

TK TAITO



LADY ROSEVAL

Custom Made. Featuring a wrap v neck with dramatic puff sleeves, a corporate look cape and a wrap Collin midi skirt , hand bag and earrings by Lenna Earings - Dress by TKT Bridal and Couture



TT03

TK TAITO



LADY SCANLAN

Black evening gown with open arms, custom made a Samoan Hair piece to represent the designer's ethnicity. This gown is also available in white, brown and beige or in sequins.



ARTIST/CRAFTER

POFAIVA TALAKAI



**THE
GENERATOR**



(Tongan)

Matavai He Lotu Handicrafts

Pofaiva makes Tongan arts and craft; Kato teu, Teunga Tauolunga, Kahoa. and sells online and markets. She uses the craft making skills she learnt in Tonga to make her products and sell them to help her family pay bills and educate her 3 children.

<https://www.facebook.com/profile.php?id=100094625002085>



Scan the code with your smartphone camera to get in touch with the artist



PT01

POFAIVA TALAKI



HANDWOVEN BASKET LARGE

Handwoven basket with pearls and shells.

PT02

POFAIVA TALAKI



HANDWOVEN BASKET MEDIUM

Handwoven basket with pearls and shells.

ARTIST/CRAFTER

MOSHEN SAKHRAVI



THE
GENERATOR



Mohsen Sakhravi (Iranian).

Mohsen Sakhravi recently arrived in NZ with his young family having spent considerable time in a refugee detention centre in Papua New Guinea. Mohsen is a self-taught creative artist who's been making and selling epoxy resins products since 2017.

<https://www.facebook.com/luan.jack.125>

<https://thegenerator.org.nz/inspiration/projects/mohsensakhravims>



Scan the code with your smartphone camera to get in touch with the artist

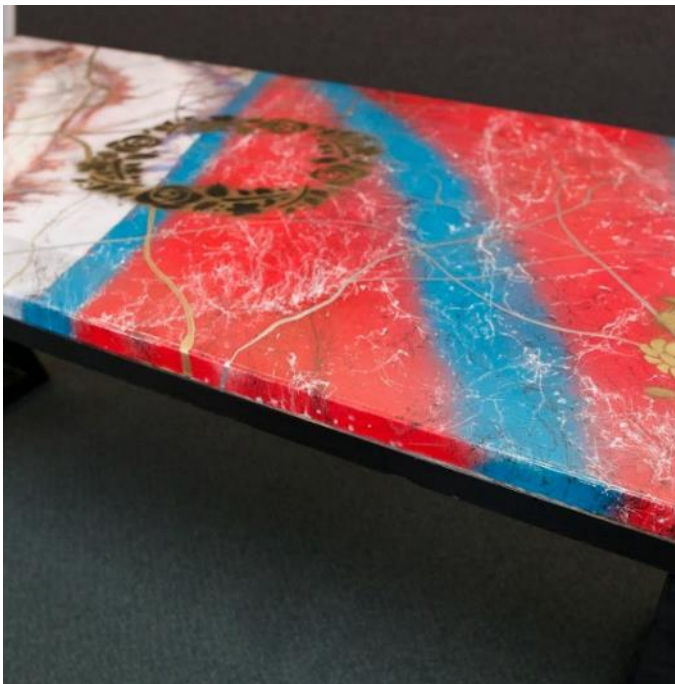


MS01

MOHSEN SAKHRAVI

RESIN COFFEE TABLE

Resin coffee table.



MS02

MOHSEN SAKHRAVI

SUMMER WATERFALL

Summer Waterfall.



MS03

MOHSEN SAKHRAVI

BUTTERFLY WING

Butterfly Wing.



ARTIST/CRAFTER

LOYD MATIU-WHIRI



THE
GENERATOR

Lloyd Matiu-Whiri was born in Whakatāne but now lives in Dargaville as a single Dad raising four children. He is a self-taught artist and enjoys the flexibility, colour and messages he can convey through digital pop art.

<https://www.facebook.com/profile.php?id=100086457014685>

<https://thegenerator.org.nz/inspiration/projects/lloydmatiu-whirilmw>

Scan the code with your
smartphone camera to get
in touch with the artist



LMW01

LLOYD MATIU-WHIRI



BREAKING THE GENERATIONAL CYCLE

The 90cmx240cm artwork shows Lloyd as a superhero Dad raising superhero mokos that are no longer plagued by unhelpful generational patterns from the past.

ARTIST/CRAFTER

ASHLEE BAYNE



THE
GENERATOR

(Ngāti Wai, Irish and Pakeha) – Financial Expert Coach, The Generator

Ashlee is an expert financial coach who helps Generites with their financial planning. She is a qualified Accountant who has fulfilled a variety of roles and since 2019 has owned and operated my own home-based accounting enterprise since 2019 with over 100 clients and growing. Ashlee comes from a line of very creative and artistic wāhine toa and enjoys designing pop art of familiar characters in very different contexts.

https://www.instagram.com/ashlee_art_journey/?igshid=NzZlODBkYWE4Ng%3D%3D

<https://thegenerator.org.nz/inspiration/projects/ashleebayne>

Scan the code with your smartphone camera to get in touch with the artist

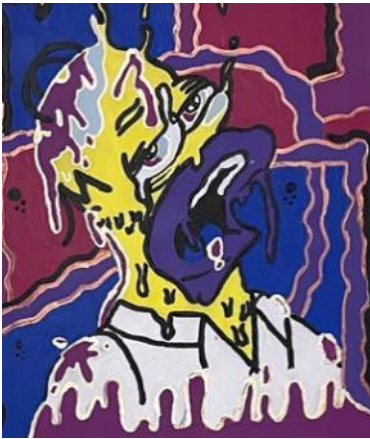


AB01

ASHLEE BAYNE

THE SIMPSONS: A PSYCHEDELIC ODYSSEY

The Simpsons: A Psychedelic Odyssey Marg, Homer, Lisa, Maggie Bart.



AB02

ASHLEE BAYNE

BELLE (FROM BEAUTY & THE BEAST)

La Beauté Enchantée de Belle (The Enchanted Beauty of Belle).



ARTIST/CRAFTER

JANINE NGARIMU-WHYTE



THE
GENERATOR



Janine is a Māori artist who has designed a range of artwork inspired by the Koru, representing new beginnings, growth, strength and peace. Art is important to Janine as it has provided a vital pathway toward healing and enabling her to live her strongest life following illness and treatment.

www.janine-ngadsignz.co.nz

<https://www.facebook.com/Janine.at.Nga.Dsignz>

Janine@Nga Dsignz

<https://thegenerator.org.nz/inspiration/projects>



Scan the code with your smartphone camera to get in touch with the artist



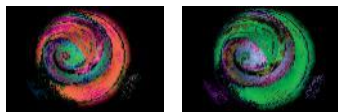
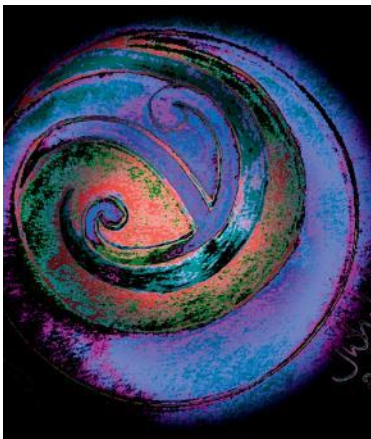
JNW01-1/-2/-3

JANINE NGARIMU-WHYTE

WHANAUNGATANGA

Inspired by my whānau, it portrays endless togetherness. Whanaungataunga is about relationships with whanau being the root word and evoking whānau ties, connections and whakapapa.

Three colour choices. (purple, orange, green)

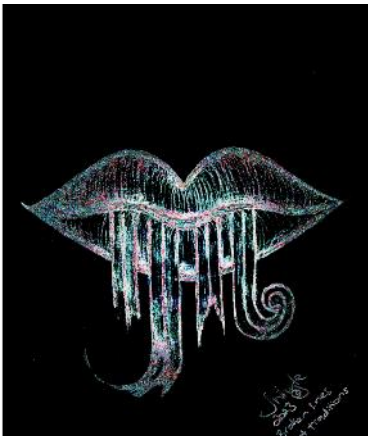


JNW02

JANINE NGARIMU-WHYTE

BROKEN LINES

This piece is inspired by her sister who after 5 generations has revived and now wears our whānau moko kaue. If it was not for her, it may have been lost like so many taonga here in Te Tai Tokerau.



JNW03

JANINE NGARIMU-WHYTE

OFF THE GRID

This piece was inspired by Maturanga Māori - Maramataka - being self-sufficient Off the Grid away from the urban grind.



JNW04

JANINE NGARIMU-WHYTE

ATAAHUA

This was inspired by my daughter who is a beauty therapist. Accentuating the female form.



JNW05

JANINE NGARIMU-WHYTE

GIFT CARDS – PACKET OF 4

Mixed or one of the collection.

Koruana Collection: Selection of prints from my original acrylic paintings on canvas (silver fern, opposites attract, Pohutukawa, embrace

Aroha Collection: Inspired from the heart, Whanau love.

Radioactive Collection: Radioactive Collection - This collection was inspired during my cancer treatment. Radiation made beautiful.

I figured that if I had to have this stuff inside me, that I would colour it up, and make it beautiful.



ARTIST/CRAFTER

TROY JACKSON



THE
GENERATOR



Savage Designs.

Troy Jackson (NZ Māori, Niuean, African American) is a self-taught artist who utilises a variety of mediums to capture the inner energy and story held within materials. Troy is often commissioned by organisations to craft a variety of taonga; carvings, trophies and gifts.

<https://thegenerator.org.nz/inspiration/projects/troykjacksonj>

Scan the code with your
smartphone camera to get
in touch with the artist



TJ01

TROY JACKSON

TOHORA (WHALE)

Carved in Canadian cedar, this captures the flick of the whale's tail with the use of Māori and Pasifika designs



TJ02

TROY JACKSON

FOLAU KI AOTEAROA

Journey/migration to Aotearoa.

Large carving in Totara with Māori and Pasifika designs



TJ03

TROY JACKSON

KŌTUKU (HERON)

Carved in pine.



TJ04

TROY JACKSON

THE ROCK

Carved rock



TJ05

TROY JACKSON

WALKING STICK AND STAND

Walking stick is carved (with Dolphin images) Pohutukawa

Stand is pine



TJ06

TROY JACKSON

HAKAPU

Niuean warrior from my Father's village of Auta.



TJ07

TROY JACKSON

MANU

Large 3 dimensional Māori and Pasifika carving.



ARTIST/CRAFTER

DANIELLE ADAMS



THE
GENERATOR



Danielle Adams is a self-taught resin artist. Over time, through trial and error, she has developed her skills in resin to now integrate it with other mediums, to produce unique pieces of art. As Danielle learns more about her Māori heritage, she is able to combine Te Ao Māori with her love of nature into her art.

In 2021 Danielle made her first 3D whale wall art during the lockdown, inspired by her youngest son's love of whales. Since then, Danielle has created many different highly sought after 3D art pieces.

Danielle is of Māori and European descent. Her aspiration is to continue creating art and functional art pieces that combine the beauty of both her cultures in a harmonious and elegant fashion.

<https://www.facebook.com/adamsfamilyproductions>

<https://thegenerator.org.nz/inspiration/projects/danielleadamsda>

Scan the code with your smartphone camera to get in touch with the artist



DA01

DANIELLE ADAMS

HINEMOA AND TUTANEKAI. THE SOUND OF LOVE

The romantic love story of Hinemoa and Tutanekai is told in the beautiful song titled Pokarekare Ana.

This piece shows Tutanekai's music floating across the water, guiding Hinemoa towards him.



DA02

DANIELLE ADAMS

NGA MAIA O AO TUROA. ENDURING THE NATURAL WORLD

This piece shows a mother dolphin taking her young on an arduous journey through the sea teaching them to endure their natural environment.



DA03

DANIELLE ADAMS

THE POURING OUT

The Hue/Gourd is used to represent the heart/manawa. The water is used to represent pain and hurt/mamai /Pouring Out. When we feel negative emotions that can hurt like sadness, frustration, shame or anger, this hurt can fill our hearts. Once full, it can manifest itself in the physical like "heartaches". The build-up of hurt can lead to blockages that are physically felt as a 'lump in the throat'. As you begin 'pouring out', by voicing and articulating your hurt, the blockages are opened and there is opportunity to start the process of healing.



DA04

DANIELLE ADAMS

WAIKUA O TE MOANA, SPIRIT OF THE SEA

I was looking for inspiration from the Moana (Sea) and the animals that call the ocean home. As a mother, I thought of the mothers of the sea, and the tohora (whale) seemed to express many values I strive to uphold to be a better person and mother. Powerful, but gentle. Courageous and beautiful. The tohora (whale) is significant to both Māori and Pakeha alike, invoking awe, not only through impressive physical appearance, but through a deep connection spirituality as well. I wanted to capture a snapshot of this majestic creature nurturing her calves to be able to face their world.



DA05

DANIELLE ADAMS

TREE OF LIFE

Symbol of abundant life.



DA06

DANIELLE ADAMS

FREEDOM

Skate meets surf to create a piece that takes you to the ramps and waves for some active relaxation.



DA07

DANIELLE ADAMS

KAITIAKI, GUARDIAN

This piece expresses a mother dolphin teaching her young to negotiate the difficult situations that arise in life.



DA08

DANIELLE ADAMS

RONA AND THE MOON

This piece is inspired by the story of Rona and the Moon. It shows Marama (the moon), who wins Rona's love and gifts her a beautiful korowai (cloak) adorned with stars.



DA09

DANIELLE ADAMS

ROUND PLATTERS

Round resin platters.



DA10

DANIELLE ADAMS

POUNAMU INSPIRED EARRINGS - TEARDROP

Pounamu inspired earrings. Teardrop.



DA11

DANIELLE ADAMS

POUNAMU INSPIRED EARRINGS - PATU

Pounamu inspired earrings. Patu.



DA 12

DANIELLE ADAMS

POUNAMU INSPIRED EARRINGS - KORU

Pounamu inspired earrings. Koru.



DA 13-1/-2/-3

DANIELLE ADAMS

CHAMPAGNE FLUTES - PAIRS

Champagne flute pairs:

Red;

Gold;

Silver



DA 14

DANIELLE ADAMS

COASTERS WHITE & GOLD

Coasters, set of 4.



DA15

DANIELLE ADAMS

MINI PLATTER BOARDS

Mini platter board.



DA16-1/-2/-3/-4/-5/-6

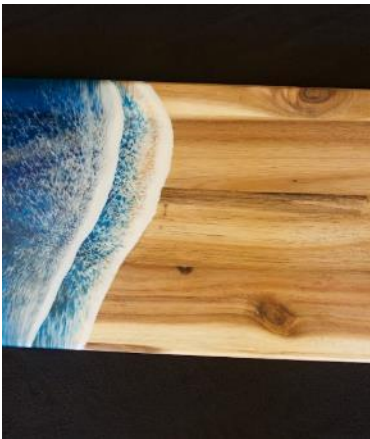
DANIELLE ADAMS

MEDIUM PLATTER BOARD

Medium platter board:

One blue

Five green



DA 17

DANIELLE ADAMS

LARGE PLATTER BOARD - BLUE

Large platter board, blue



DA18-1/-2/-3/-4

DANIELLE ADAMS

WINE GLASSES

3 pairs: Turquoise & gold

1 pair: Green & gold



DA19

DANIELLE ADAMS

HERU

Heru.

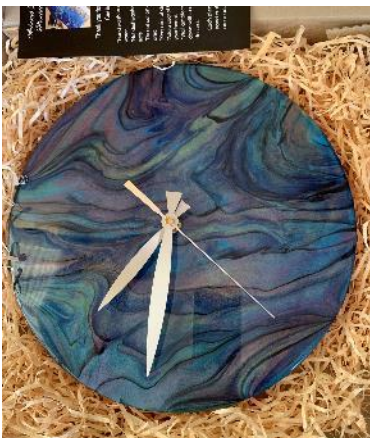


DA20

DANIELLE ADAMS

PAUA CLOCK

Paua clock.



DA21-1/-2/-3

DANIELLE ADAMS

BOTTLE OPENERS

3 items.



DA22

DANIELLE ADAMS

SURFBOARD PLATTER

Surfboard platter (Mahogany).



DA23

DANIELLE ADAMS

SQUARE PLATTER

Square platter Puhoro.





DA24-1/-2/-3/-4/-5/-6

DANIELLE ADAMS



SECONDS: CHAMPAGNE FLUTES - 6 PAIRS

Seconds: Champagne flutes. 6 pairs:

Turquoise;
Red;
Green & gold;
Shell;
Copper;
Blue

DA25

DANIELLE ADAMS



LARGE BOARD - GREEN

Large board - green

DA26-1/-2

DANIELLE ADAMS



PAPAHOU

Papahou. 2 available.

ARTIST/CRAFTER

MARK LANG



**THE
GENERATOR**



TIKA PONO TOI

<https://www.facebook.com/tika.pono.toi>

<https://thegenerator.org.nz/inspiration/projects/marklangml>

Talented Māori carver [Mark Lang](#) (Ngapuhi, Ngati Horahia), is celebrating a milestone in his journey from prison inmate to recognised artist, with the opening of his gallery and Studio, Tika Pono Toi, supported by [The Generator](#) whānau and Kaipara community. This latest milestone reflects the carver's ambitions to use the power of carving and indigenous artforms to transform lives and change futures.

The art of carving was Mark's pathway back to wellbeing and mana. He learnt his craft while in Hawkes Bay prison under the [Hokai Rangī](#) programme. While in prison he carved several significant taonga including a carving now located in Corrections Head Office in Wellington, Tipuna Pou for Ngati Pahauwera, and taonga for 2021-2022 Te Putanga Toi Arts Access Awards. This exhibition displays some of his commissioned pieces and some items for auction.

Scan the code with your smartphone camera to get in touch with the artist



MLO1

MARK LANG

PATU (1)

The Patu is a traditional Māori weapon used as a thrusting weapon to strike the opponent below the ribs, on the temple, or across the jaw. Traditionally the Patu was made from wood, whalebone, or stone. If made from greenstone (pounamu) the Patu was usually called a mere.



MLO2

MARK LANG



TAIAHA (1)

The Taiaha is one of the most iconic Māori weapons. It was born when Tū, the god of war sought out Rūrūtangiākau, the weapon maker of the gods. He asked her to fashion a weapon that would be unmatched by any other.

So Rūrūtangiākau created Akerautangi, the father of Taiaha.

It had a long strong body to block, parry and attack. It had four faces to see in all directions, a protruding tongue to taste the flesh of its enemy, and one sharp leg that could split the earth.

Today the Taiaha is a physical representation of Akerautangi, the father of all taiaha..

Akerautangi eventually evolved and became a tree which to 'the blade that shall forever reap.' still grows throughout Aotearoa. It is one of our strongest hardwoods (Akeake), which is short for Ake-Rau-Tangi, meaning.

MLO3

MARK LANG



TEWHATEWHA (1)

Tewhatewha were often referred to by Māori as the 'rakau rangatira,' or chiefly weapon because they were almost invariably seen in the hands of rangatira.

The weapon was used to signal warriors during battle, on the marae, or marking time for paddlers in war canoes. People who carried the tewhatewha had considerable mana.

The raparapa, or striking end of the tewhatewha, had a hole drilled through it so that hawk or pigeon feathers could be attached. Experienced warriors often flicked the suspended feathers into their opponent's eyes, and, while their opponents were momentarily distracted, stabbed them with the pointed end of the weapon before reversing arms and striking the head with the straight front surface of the blade.

MLO4

MARK LANG



TEWHATEWHA (2)

Tewhatewha were often referred to by Māori as the 'rakau rangatira,' or chiefly weapon because they were almost invariably seen in the hands of rangatira.

The weapon was used to signal warriors during battle, on the marae, or marking time for paddlers in war canoes. People who carried the tewhatewha had considerable mana.

The raparapa, or striking end of the tewhatewha, had a hole drilled through it so that hawk or pigeon feathers could be attached. Experienced warriors often flicked the suspended feathers into their opponent's eyes, and, while their opponents were momentarily distracted, stabbed them with the pointed end of the weapon before reversing arms and striking the head with the straight front surface of the blade.

MLO5

MARK LANG



HOE (1)

The paddle or hoe was the means of propulsion for the Māori waka (canoe). While the hoe was primarily a paddle, it also doubled as a weapon when the need arose. Carved paddles were the property of the chief and were highly valued. The hoe came in different styles and the handles and blades differed from area to area.

ML06

MARK LANG



PATU (2)

The Patu is a traditional Māori weapon used as a thrusting weapon to strike the opponent below the ribs, on the temple, or across the jaw. Traditionally the Patu was made from wood, whalebone, or stone. If made from greenstone (pounamu) the Patu was usually called a mere.

ML07

MARK LANG



HOE (2)

The paddle or hoe was the means of propulsion for the Māori waka (canoe). While the hoe was primarily a paddle, it also doubled as a weapon when the need arose. Carved paddles were the property of the chief and were highly valued. The hoe came in different styles and the handles and blades differed from area to area.

ML08

MARK LANG



TAIAHA (2)

The Taiaha is one of the most iconic Māori weapons. It was born when Tū, the god of war sought out Rūrūtangiākau, the weapon maker of the gods. He asked her to fashion a weapon that would be unmatched by any other.

So Rūrūtangiākau created Akerautangi, the father of Taiaha.

It had a long strong body to block, parry and attack. It had four faces to see in all directions, a protruding tongue to taste the flesh of its enemy, and one sharp leg that could split the earth.

Today the Taiaha is a physical representation of Akerautangi, the father of all taiaha..

Akerautangi eventually evolved and became a tree which to 'the blade that shall forever reap.' still grows throughout Aotearoa. It is one of our strongest hardwoods (Akeake), which is short for Ake-Rau-Tangi, meaning

ML09

MARK LANG



TAIAHA (3)

The Taiaha is one of the most iconic Māori weapons. It was born when Tū, the god of war sought out Rūrūtangiākau, the weapon maker of the gods. He asked her to fashion a weapon that would be unmatched by any other.

So Rūrūtangiākau created Akerautangi, the father of Taiaha.

It had a long strong body to block, parry and attack. It had four faces to see in all directions, a protruding tongue to taste the flesh of its enemy, and one sharp leg that could split the earth.

Today the Taiaha is a physical representation of Akerautangi, the father of all taiaha..

Akerautangi eventually evolved and became a tree which to 'the blade that shall forever reap.' still grows throughout Aotearoa. It is one of our strongest hardwoods (Akeake), which is short for Ake-Rau-Tangi, meaning

ML10

MARK LANG



TAIAHA (4)

The Taiaha is one of the most iconic Māori weapons. It was born when Tū, the god of war sought out Rūrūtangiākau, the weapon maker of the gods. He asked her to fashion a weapon that would be unmatched by any other.

So Rūrūtangiākau created Akerautangi, the father of Taiaha.

It had a long strong body to block, parry and attack. It had four faces to see in all directions, a protruding tongue to taste the flesh of its enemy, and one sharp leg that could split the earth.

Today the Taiaha is a physical representation of Akerautangi, the father of all taiaha..

Akerautangi eventually evolved and became a tree which to 'the blade that shall forever reap.' still grows throughout Aotearoa. It is one of our strongest hardwoods (Akeake), which is short for Ake-Rau-Tangi, meaning

ML11

MARK LANG



PATU (3)

The Patu is a traditional Māori weapon used as a thrusting weapon to strike the opponent below the ribs, on the temple, or across the jaw. Traditionally the Patu was made from wood, whalebone, or stone. If made from greenstone (pounamu) the Patu was usually called a mere.



AO TE PŌ AUCTION

TIKA PONO TOI GALLERY & STUDIO

NGĀ MIHI



THE
GENERATOR